

AXMINSTER

woodturning

# Pepper Mill

Instructions by Colwin Way

175mm Pepper Mill Kit **Code: 300272**

300mm Pepper Mill Kit **Code: 200330**

AT: 08/12/2020  
BOOK VERSION: 3

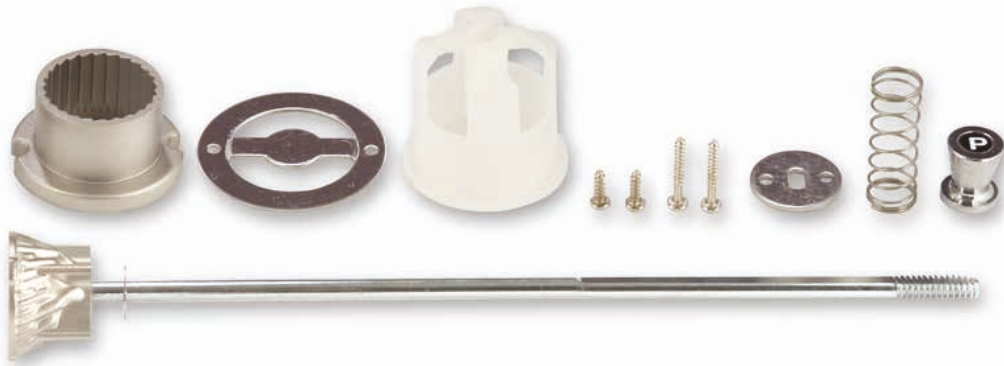


## What's Included

### Pepper Mill Grinder Kits

Code: 300272 **175mm**

Code: 200330 **300mm**



### Tools

#### Drill Bits

Pepper Size	Salt Size
28mm	25mm
35mm	32mm
38mm	35mm
18mm	18mm

#### Turning Tools

Tool
Roughing Gouge
Bowl on Spindle Gouge
Parting Tool
Skew Chisel

### Finishing

#### Abrasive Pads

Pads
100g
150g
240g
400g

#### Finishing Oil

Chestnut Finishing Oil
500g

## Turning Instructions

### Section 1

#### Process 01



#### • Roughing Down

#### Process 02



#### • Making Spigot

To hold in chuck, ensure you repeat this on both ends.

#### Process 03



#### • Dividing Head

Divide your blank ready for parting.

#### Process 04



#### • Parting Cut

Leaving roughly 25mm solid timber.



Process 05



- **Sawing parting cut**  
Through remaining spigot.

Process 07



- **Mounting the Blank**

Process 09



- **Drilling second hole**  
35mm (Depth 3mm)

Process 11



- **Turning the piece over**  
Reverse the blank.

Process 06



- **Attaching the Chuck**

Process 08



- **Drilling large hole**  
38mm (Depth 6mm)

Process 10



- **Drilling final hole**  
28mm (Depth Just over half way)

Process 12



- **Drilling from other side**

# Turning Instructions

## Section 2

Process 13



- **Mounting top section**

Process 15



- **Creating Spigot**  
To match main centre hole.

Process 17



- **Waste piece of timber**  
Using waste piece of timber to create drive spigot.

Process 19



- **Roughing down**  
Roughing down the two parts together.

Process 14



- **Drilling the holes**  
Firstly with a 18mm bit to 2mm deep then all the way through with a 5mm bit.

Process 16



- **Checking with Calipers**  
The Spigot to locate into the main hole in the bottom section of the grinder.

Process 18



- **Reassemble**  
Reassemble the two parts of the grinder and mount on the lathe.

Process 20



- **Turning the shape (part 1)**



# Assembly Instructions

Process 21



• Turning the shape (part 2)

Process 23



• Polishing or Oiling the grinder

Process 22



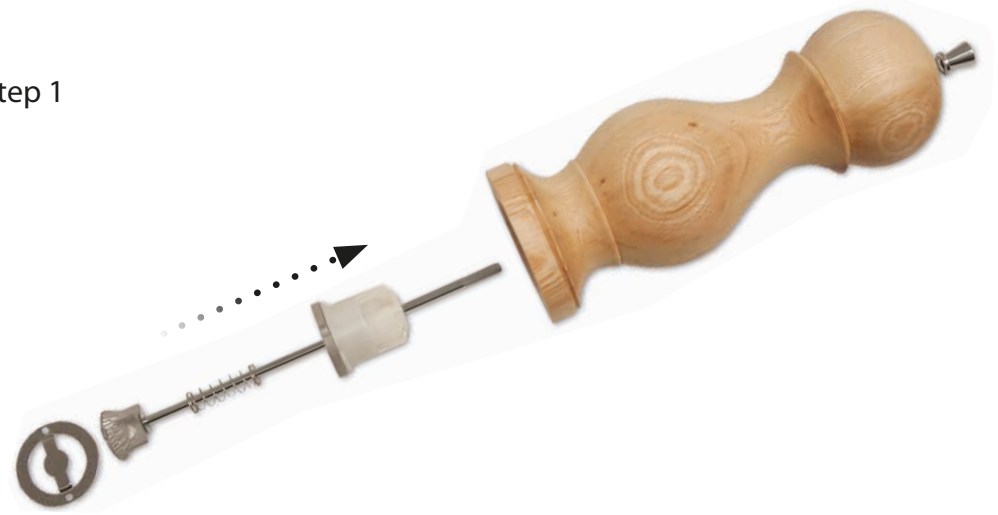
• Sanding down

Process 24

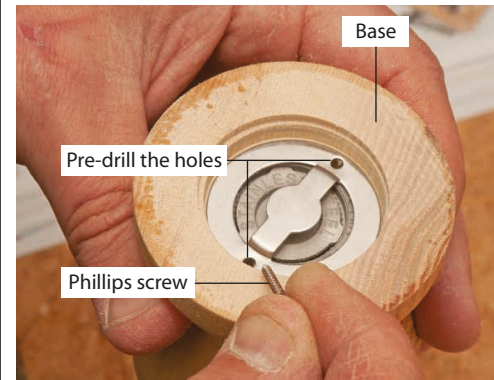


• Remove any excess oil

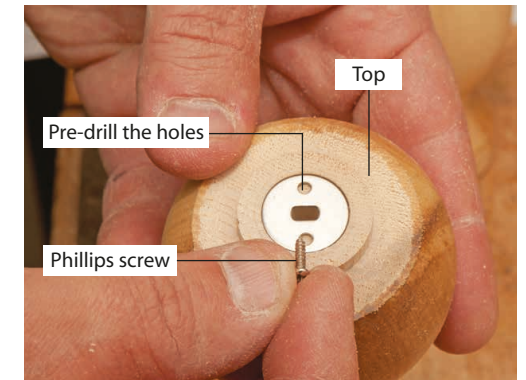
Step 1



Step 2



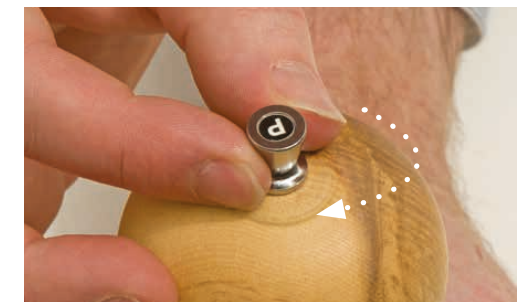
Step 3



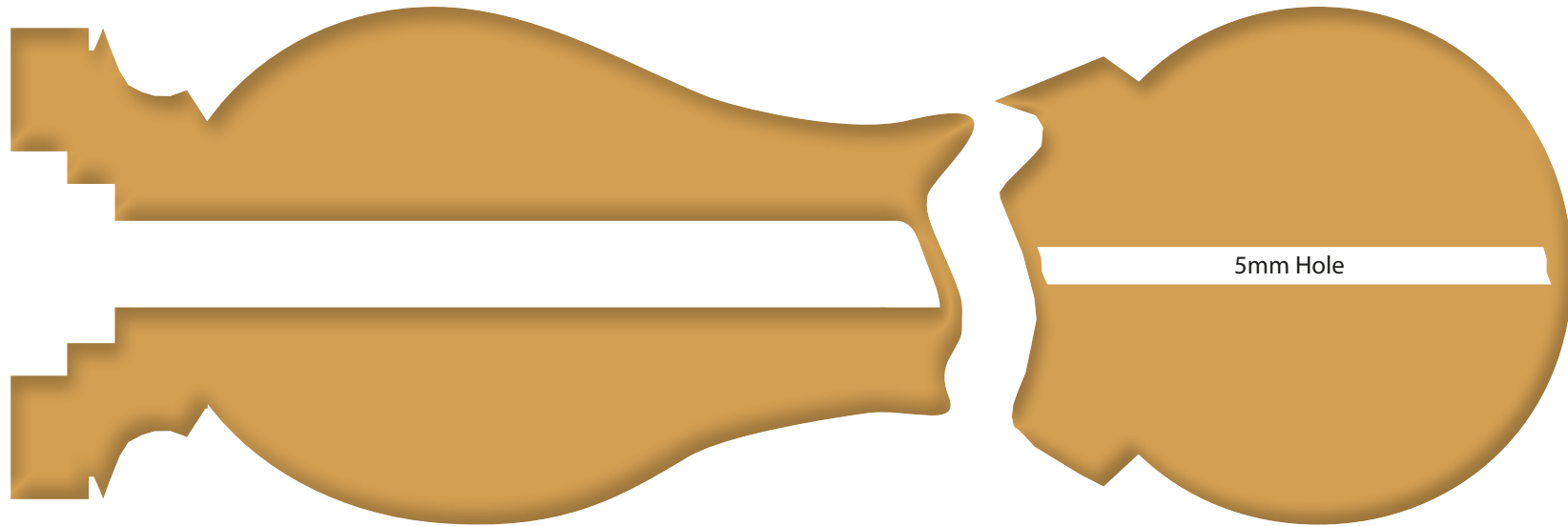
Step 4



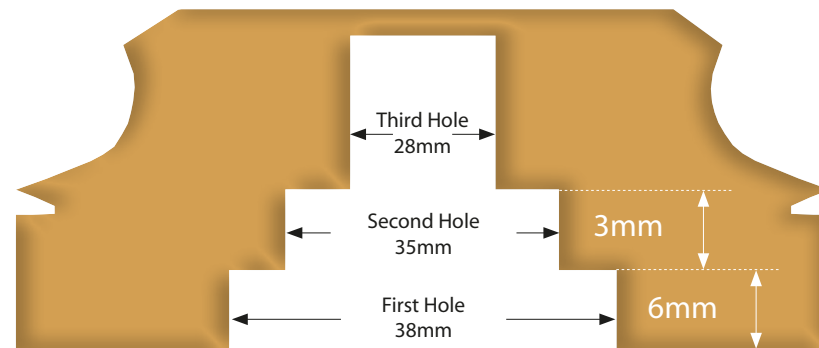
Step 5



# Pepper Mill Diagram



Pepper









Axminster Tools, Axminster, Devon, EX13 5PH

[axminstertools.com](http://axminstertools.com)